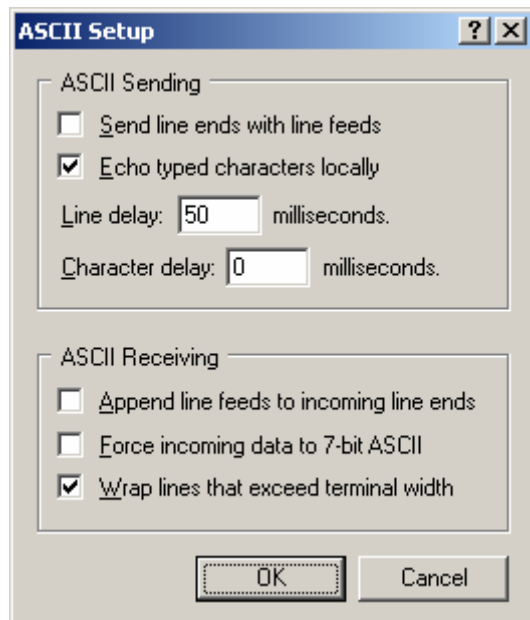


QBridge Quick Start Guide

1. Plug the QBridge device directly into the available PC serial port. Do not use any cable for now.
2. Set up your Windows's Hyper terminal as below:
 - a. 9600 Baud rate, 8 data bits, 1 stop bit, no parity.
 - b. Flow control: Xon/Xoff.
 - c. Under ASCII setup: check 'Echo typed characters locally'.
 - d. Set 'Line delay' to 50 milliseconds.
 - e. Uncheck the "Send line ends with line feeds"



3. Make sure that there is NO connection between <Boot> pin and <GND> pin on the QBridge device.
4. Apply +9 ~ 12 V DC power to the QBridge. Since the QBridge has internal +5 volts regulator, it requires external voltage that is greater than +5 volts.
5. After the power is applied, a QBridge menu shall automatically come up in the Windows's hyper terminal.

Note: For QBridgeV2 with software version 1.5, Menu can only pop up in ASCII mode (a character is sent to the device within 5 seconds after power up), binary mode is entered otherwise.